

# Regal Eagle Review



Volume 21

December 2009

## GLOBAL WARMING:

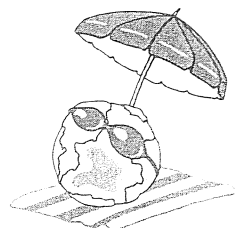
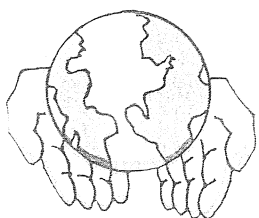
Earth has warmed by about 1°F over the past 100 years. But why? And how? Scientists are not exactly sure. The Earth could be getting warmer on its own, but many of the world's leading climate scientists think that things people do are helping to make the Earth warmer. Scientists are sure about the greenhouse effect. They know that greenhouse gases make the Earth warmer by trapping energy in the atmosphere.

Climate is the long-term average of a region's weather events lumped together. For example, it's possible that a winter day in Buffalo, New York, could be sunny and mild, but the average weather – the climate – tells us that Buffalo's winters will mainly be cold and include snow and rain. Climate change represents a change in these long-term weather patterns. They can become warmer or colder. Annual amounts of rainfall or snowfall can increase or decrease.

Global warming refers to an average increase in the Earth's temperature, which in turn causes changes in climate. A warmer Earth may lead to changes in rainfall patterns, a rise in sea level, and a wide range of impacts on plants, wildlife, and humans. When scientists talk about the issue of climate change, their concern is about global warming caused by human activities.

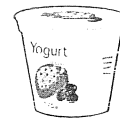
Climate change may alter the world's habits and ecosystems – all living things are included in and rely on these places. Many of these places depend on a delicate balance of rainfall, temperature, and soil type. A rapid change in climate could upset this balance and seriously endanger many living things.

Most past climate changes occurred slowly, allowing plants and animals to adapt to the new environment **or move** somewhere else. However, if future climate changes occur as rapidly as some scientists predict, plants and animals may not be able to react quickly enough to survive.



## Lucky Smoothie

Make this healthful, green smoothie for St. Patrick's

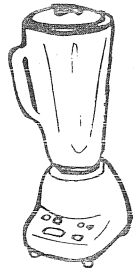


### YOU WILL NEED

- 2 (peeled) Kiwis
- 1 frozen banana
- 1/2 cup vanilla yogurt
- Splash of milk
- Dab of honey
- Green food coloring (optional)

### HERE'S HOW

With the help of an adult, put all of the ingredients into a blender and puree until smooth. Serve in a chilled glass.



## MAKING the Grade!

Hey, Kids!

Remember to bring in your report card for entries into the Regal Eagle Making the Grade Drawing.

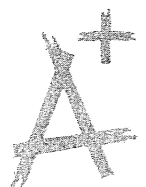
The winning ticket gets a \$25 deposit to their account.

Next drawing on **Feb. 26, 2010**

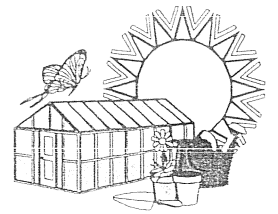
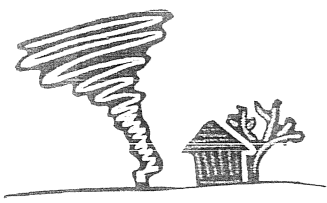
Every 'A' gets 2 entries & every 'B' gets 1 entry

Congrats to our latest winner:

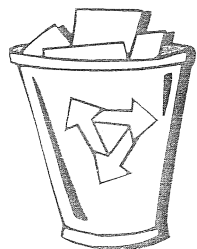
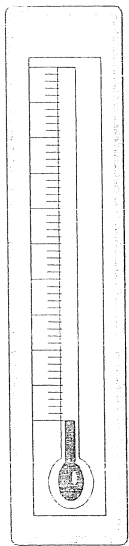
Lauren Daniel



# Global Warming Word Search



Z A X L R H P S P M S U Q E T A M I L C  
 I O R H R A I N F A L L L U N A R T I N  
 E E D T K W C B E N E R G Y O R H I S J  
 W G R R C J M X R E H T A E W Q V E S Y  
 S A A A E U R X V O P E I B O Y F V O O  
 P T M E L T U J C A E R H T C Y T C F O  
 S M V A C O U V U Y G O L O R O E T E M  
 R O X Q L I S G J H A I Z I E P J I M S  
 E S F G I H L F W J D I K K N N C E Z R  
 I P H R M B M O O C B Y N T G M O T L A  
 C H G S A A M P D G I I F B C A B Z J D  
 A E J Q T R E C Y C L E O M C T S B O I  
 L R W P O N A I W G X L X S W I D E D A  
 G E W V L M J O H N R Z O S P T S E S T  
 C S M N O X N O D B A H U O C H P R P I  
 T R E E G S Z C P O V N V X S V E Q S O  
 K E N V I R O N M E N T R G E C G R Y N  
 V T S P S L R V E S U O H N E E R G E E  
 D L R J T Y S L H E R U T A R E P M E T  
 V M E T S Y S O C E T Y F S J D F Q W U



ATMOSPHERE

ENERGY

ICE AGE

RECYCLE

BIOSPHERE

ENVIRONMENT

LUNAR

SNOW

CLIMATE

FOSSIL

METEOROLOGY

SOLAR

CLIMATOLOGIST

GASES

OZONE

SUN

EARTH

GLACIERS

RADIATION

TEMPERATURE

ECOSYSTEM

GREENHOUSE

RAINFALL

TREE

WEATHER

