



AFECU NEWS

SMALL ENOUGH TO KNOW YOU,
LARGE ENOUGH TO SERVE YOU



Since our members have been so good

Santa's Gift to you-

**SKIP YOUR PAYMENTS THIS
CHRISTMAS!**

We thank you for your continued loyalty to Angelina Federal Employees Credit Union. This holiday season you can skip your loan payments for one month. Just stop by and complete the form and we will take care of the rest. The form must be submitted by Oct. 22 to skip November payment, Nov. 19 to skip December payment and Dec. 24 to skip January payment. We wish all of you a blessed holiday season.

Christmas Loan Special

November 1, 2010 - January 31, 2011

7.99%

Up to \$2000.00 for 12 months

Normal Loan Policies Apply



HOLIDAY HOURS

AFECU will close at Noon on Wednesday November 24 and reopen on Friday November 26.

We will also close at Noon on Friday December 24 and reopen on Monday December 27.



Special hours will be:	Drive-thru	7:30 - 12:00
Have a wonderful holiday!	Lobby	8:30 - 12:00

'Tis the Season

In keeping with the true meaning of giving at this holiday season, AFECU will be collecting canned foods for the Salvation Army food pantry. Canned foods, peanut butter and non-perishable items will be accepted from November 1 to December 15 at the credit union. We will also have an angel tree in the lobby. Please stop by and adopt a angel from the tree beginning December 1 thru December 15.

Please remember that this is the season for giving. We wish you and your family a very blessed holiday season from your friends at AFECU!



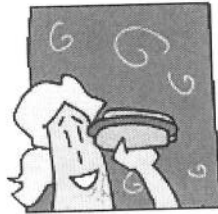
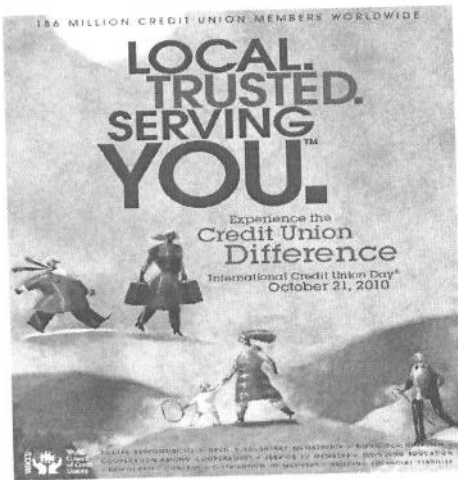
MEMBER CORNER

SANTAS COMING

International Credit Union Day-October 21

We are proud of Angelina Federal Employees Credit Union and its members!!! We will be celebrating International Credit Union Day on October 21 with hot dogs, soft drinks and popcorn. The theme this year is "Local. Trusted. Serving You. Experience the Credit Union Difference". Come by and help us celebrate International Credit Union Day with fun, food and fellowship!

Bring your children and grandchildren to the credit union on December 21 from 3:00-7:00 to visit Santa and have their picture made with him. We will have pizza, punch and cookies. Please bring a picture of each child to assist in making an ornament for our tree. They will be making ornaments to take home as well. Mark your calendars now for some great fun for the children!



HOLIDAY CLOSINGS

Monday, October 11, 2010 - Columbus Day

Thursday, November 11, 2010 - Veteran's Day

Wednesday, November 24- CLOSE AT NOON

Thursday, November 25, 2010 - Thanksgiving Day

Friday, December 24, 2010-Christmas Eve

CLOSE AT NOON

Friday, December 31, 2010 - New Year's Eve

CLOSE AT NOON

Friday, January 1, 2010 - New Year's Day



Mission Statement:

To serve the members and to promote their well being by providing comprehensive and progressive financial services. The members are served through sound lending and savings practices, dedicated to the philosophy of "People Helping People".

Hours of Operation:

Drive-Thru: Monday - Thursday 7:30 a.m. - 4:30 p.m.
 Friday 7:30 a.m. - 6:00 p.m.
 Lobby: Monday - Thursday 8:30 a.m. - 4:30 p.m.
 Friday 8:30 a.m. - 6:00 p.m.

ATM: 24/7/1 365

Office Location:

900 Pershing Avenue
 Lufkin, TX 75904

***** ATTENTION ALL MEMBERS *****

In accordance with regulations AFECU notifies it's members that the following documents are available: a summary of financial condition, the IRS Form 990 as well as any other disclosures that members are entitled to. If you are interested in any of these documents, they are currently listed on the website (www.afecu.net) under disclosures, or you may stop by and we will be happy to provide you with that information.